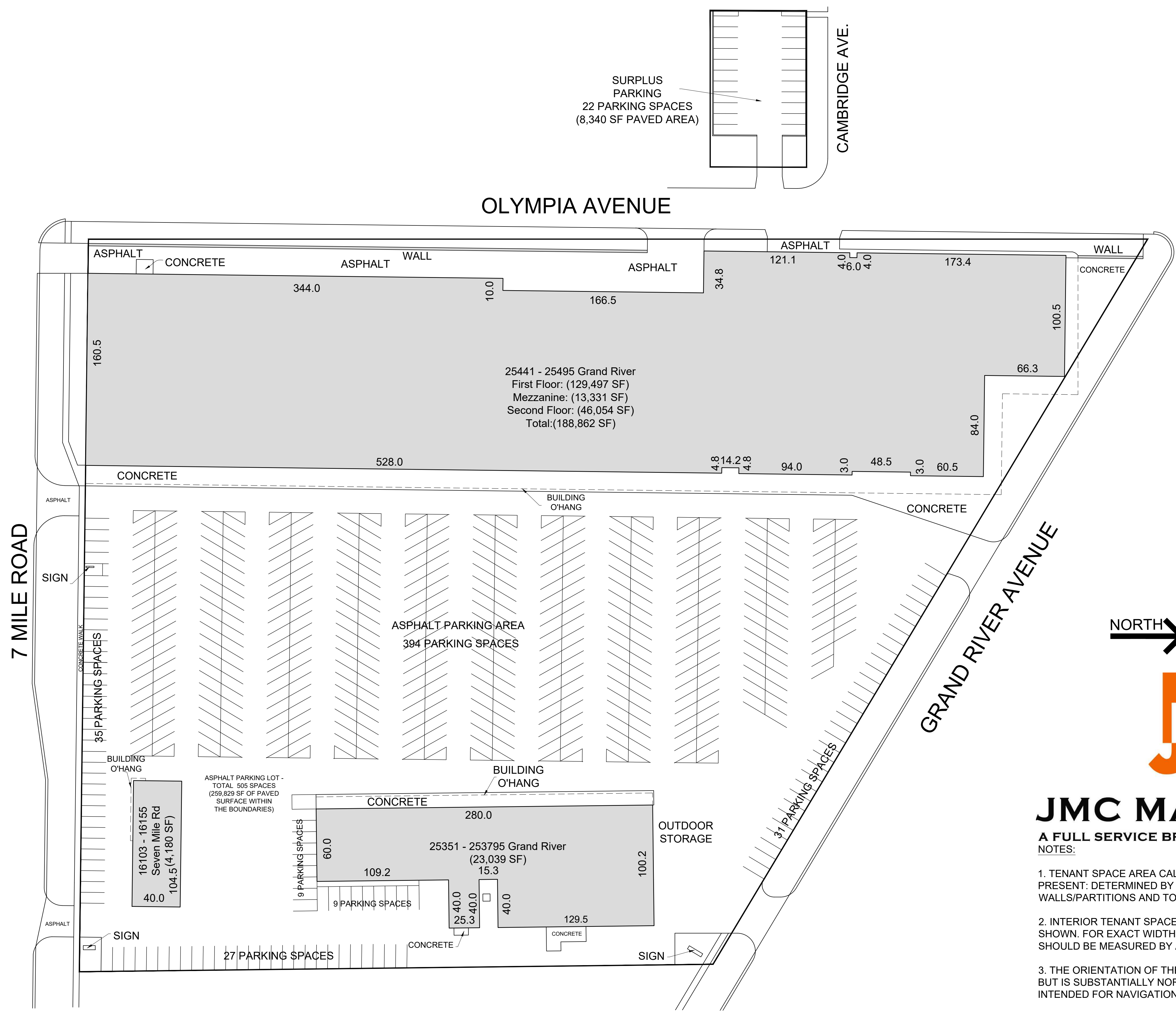


# The Shoppes at Redford Oaks

25379 - 25495 Grand River Avenue



NORTH → SITE PLAN  
NOT TO SCALE



**JMC MANAGEMENT<sup>LLC</sup>**  
A FULL SERVICE BROKERAGE AND MANAGEMENT FIRM  
NOTES:

1. TENANT SPACE AREA CALCULATIONS WHERE EXISTING DEMISING WALLS ARE PRESENT: DETERMINED BY MEASUREMENT TO THE CENTER OF DEMISING WALLS/PARTITIONS AND TO THE EXTERIOR FACE OF EXTERIOR WALLS.
2. INTERIOR TENANT SPACE WIDTH AND DEPTH DIMENSIONS ARE APPROXIMATE AS SHOWN. FOR EXACT WIDTH AND DEPTH DIMENSIONS, EACH TENANT SPACE SHOULD BE MEASURED BY A QUALIFIED PROFESSIONAL.
3. THE ORIENTATION OF THE INDICATED NORTH ARROW MAY NOT BE 'TRUE NORTH', BUT IS SUBSTANTIALLY NORTH. AS SUCH, IT IS 'CALLED NORTH' AND IS NOT INTENDED FOR NAVIGATIONAL USAGE.



# The Shoppes at Redford Oaks

25379 - 25495 Grand River Avenue

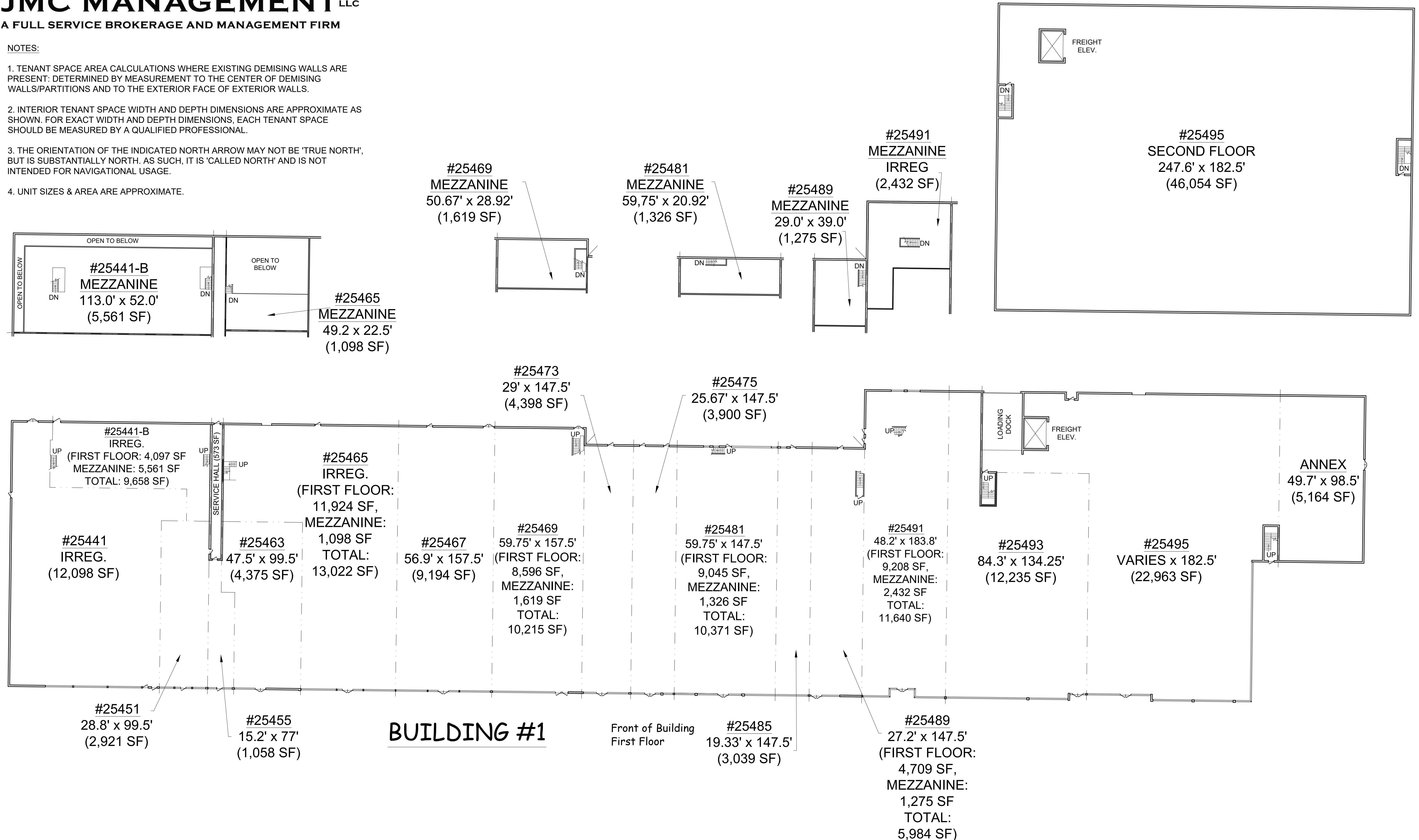
NORTH → **FLOOR PLAN**  
NOT TO SCALE

## JMC MANAGEMENT LLC

A FULL SERVICE BROKERAGE AND MANAGEMENT FIRM

### NOTES:

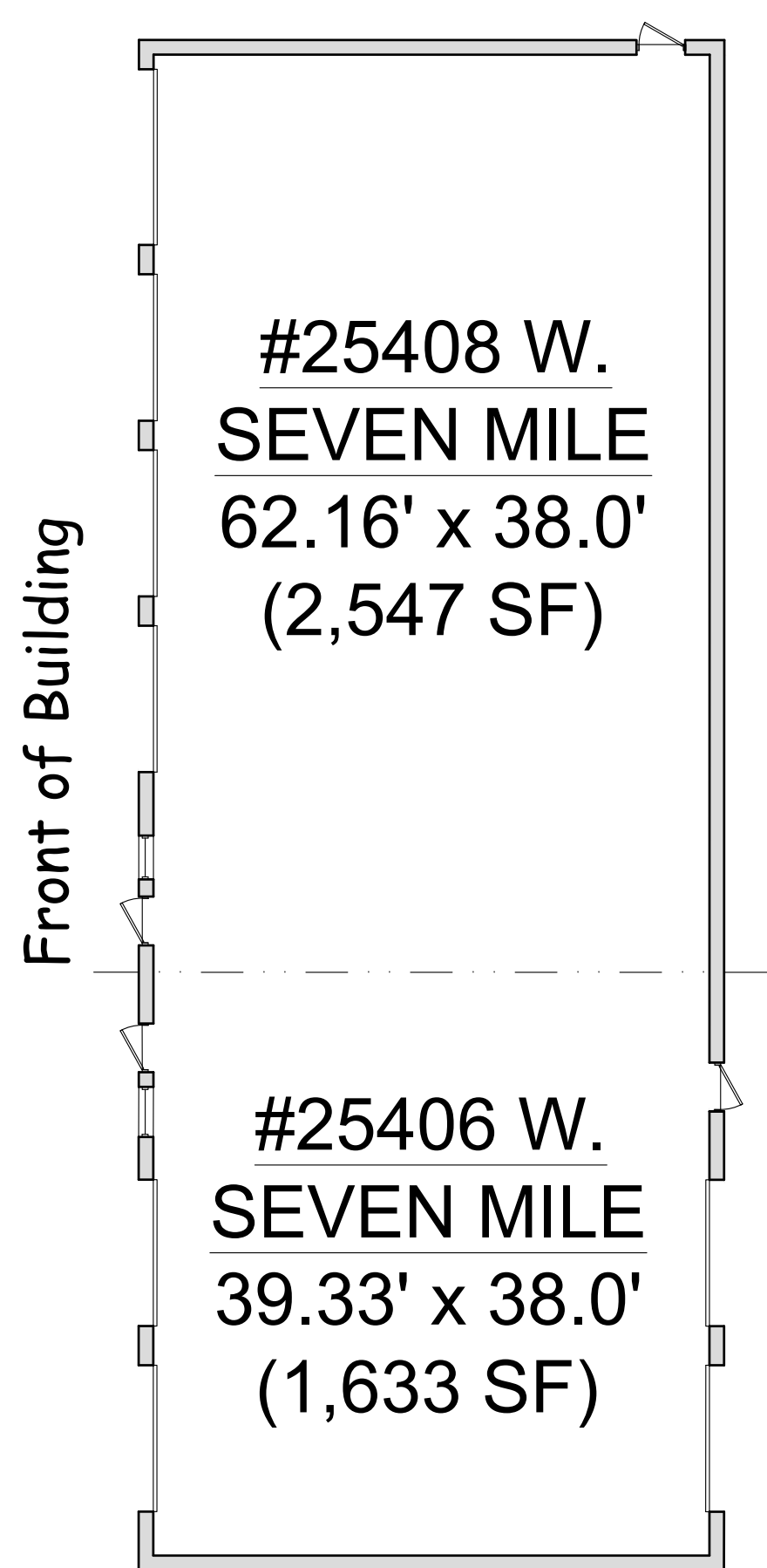
1. TENANT SPACE AREA CALCULATIONS WHERE EXISTING DEMISING WALLS ARE PRESENT: DETERMINED BY MEASUREMENT TO THE CENTER OF DEMISING WALLS/PARTITIONS AND TO THE EXTERIOR FACE OF EXTERIOR WALLS.
2. INTERIOR TENANT SPACE WIDTH AND DEPTH DIMENSIONS ARE APPROXIMATE AS SHOWN. FOR EXACT WIDTH AND DEPTH DIMENSIONS, EACH TENANT SPACE SHOULD BE MEASURED BY A QUALIFIED PROFESSIONAL.
3. THE ORIENTATION OF THE INDICATED NORTH ARROW MAY NOT BE 'TRUE NORTH', BUT IS SUBSTANTIALLY NORTH. AS SUCH, IT IS 'CALLED NORTH' AND IS NOT INTENDED FOR NAVIGATIONAL USAGE.
4. UNIT SIZES & AREA ARE APPROXIMATE.



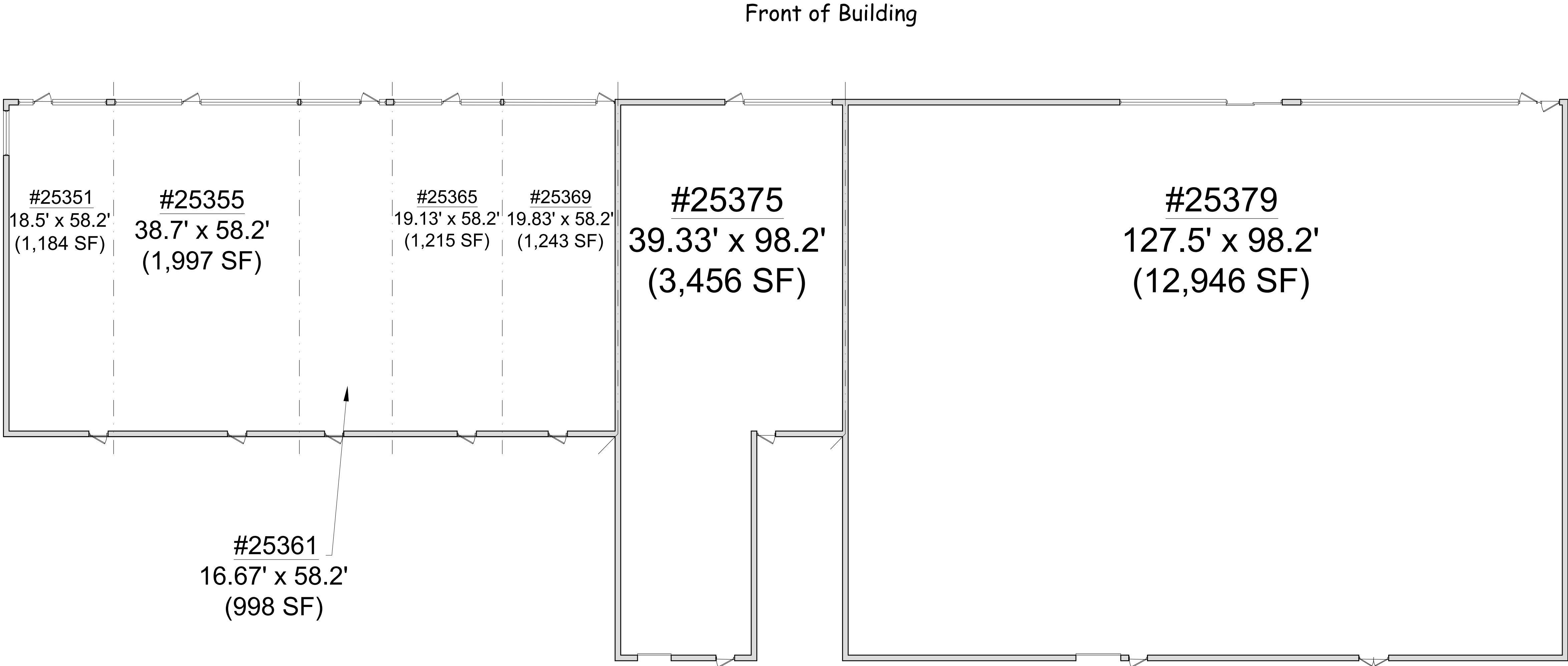


# The Shoppes at Redford Oaks

25379 - 25495 Grand River Avenue



**BUILDING #3**



**BUILDING #2**



## JMC MANAGEMENT<sup>LLC</sup>

A FULL SERVICE BROKERAGE AND MANAGEMENT FIRM

NOTES:

- 1. TENANT SPACE AREA CALCULATIONS WHERE EXISTING DEMISING WALLS ARE PRESENT: DETERMINED BY MEASUREMENT TO THE CENTER OF DEMISING WALLS/PARTITIONS AND TO THE EXTERIOR FACE OF EXTERIOR WALLS.
- 2. INTERIOR TENANT SPACE WIDTH AND DEPTH DIMENSIONS ARE APPROXIMATE AS SHOWN. FOR EXACT WIDTH AND DEPTH DIMENSIONS, EACH TENANT SPACE SHOULD BE MEASURED BY A QUALIFIED PROFESSIONAL.
- 3. THE ORIENTATION OF THE INDICATED NORTH ARROW MAY NOT BE 'TRUE NORTH', BUT IS SUBSTANTIALLY NORTH. AS SUCH, IT IS 'CALLED NORTH' AND IS NOT INTENDED FOR NAVIGATIONAL USAGE.
- 4. UNIT SIZES & AREA ARE APPROXIMATE.