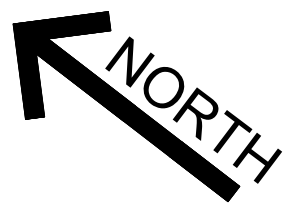
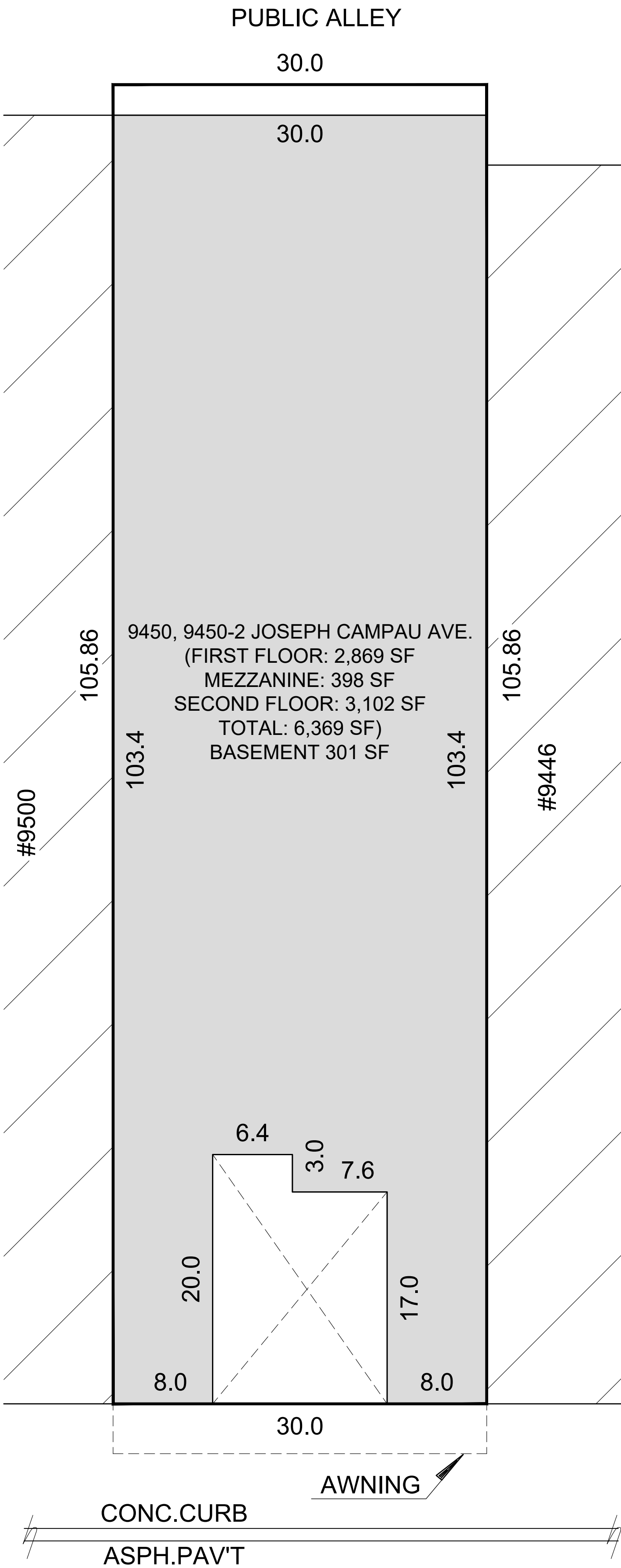


POLAND AT THE CAMPAU

9450, 9450-2 JOSEPH CAMPAU



SITE PLAN

NOT TO SCALE

NOTES:

1. TENANT SPACE AREA CALCULATIONS WHERE EXISTING DEMISING WALLS ARE PRESENT: DETERMINED BY MEASUREMENT TO THE CENTER OF DEMISING WALLS/PARTITIONS AND TO THE EXTERIOR FACE OF EXTERIOR WALLS.
2. INTERIOR TENANT SPACE WIDTH AND DEPTH DIMENSIONS ARE APPROXIMATE AS SHOWN. FOR EXACT WIDTH AND DEPTH DIMENSIONS, EACH TENANT SPACE SHOULD BE MEASURED BY A QUALIFIED PROFESSIONAL.
3. THE ORIENTATION OF THE INDICATED NORTH ARROW MAY NOT BE 'TRUE NORTH', BUT IS SUBSTANTIALLY NORTH. AS SUCH, IT IS 'CALLED NORTH' AND IS NOT INTENDED FOR NAVIGATIONAL USAGE.

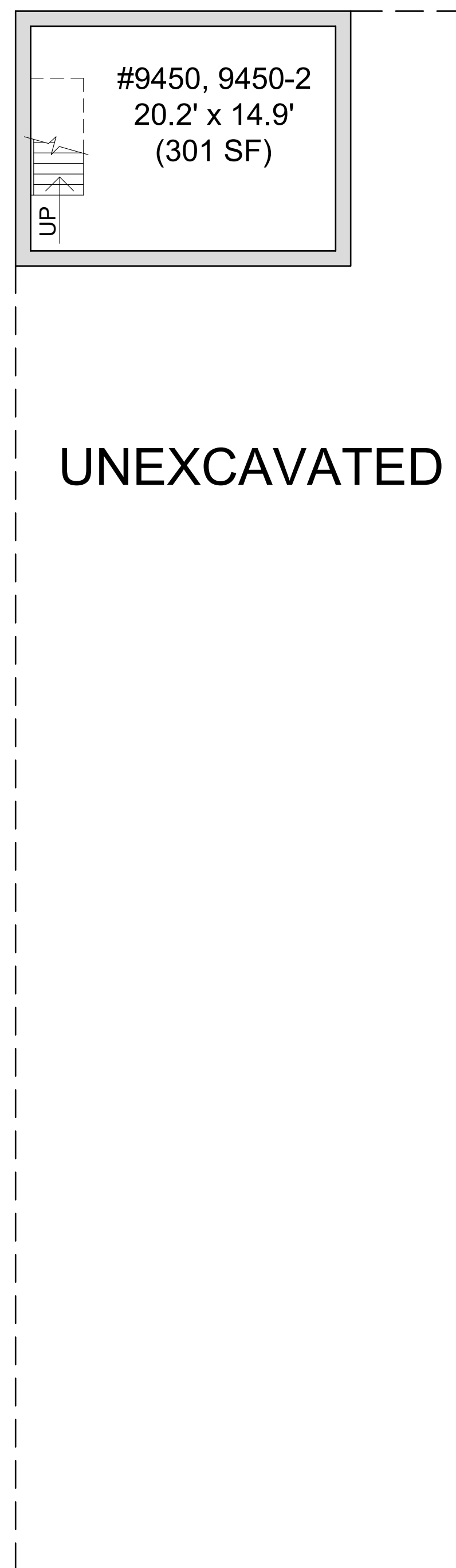


JMC MANAGEMENT LLC
A FULL SERVICE BROKERAGE AND MANAGEMENT FIRM

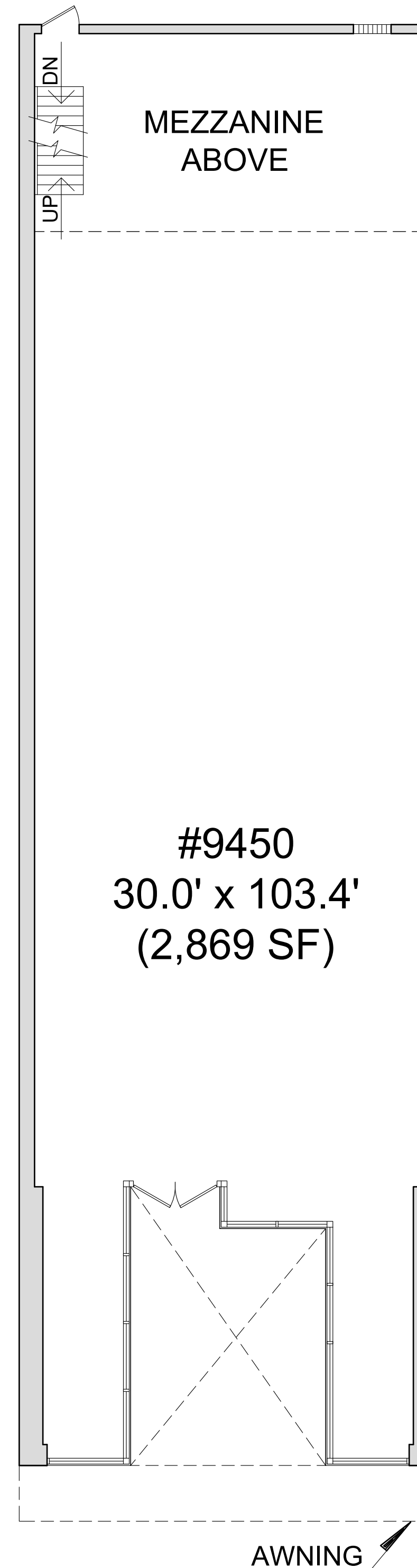
JOSEPH CAMPAU AVENUE

POLAND AT THE CAMPAU

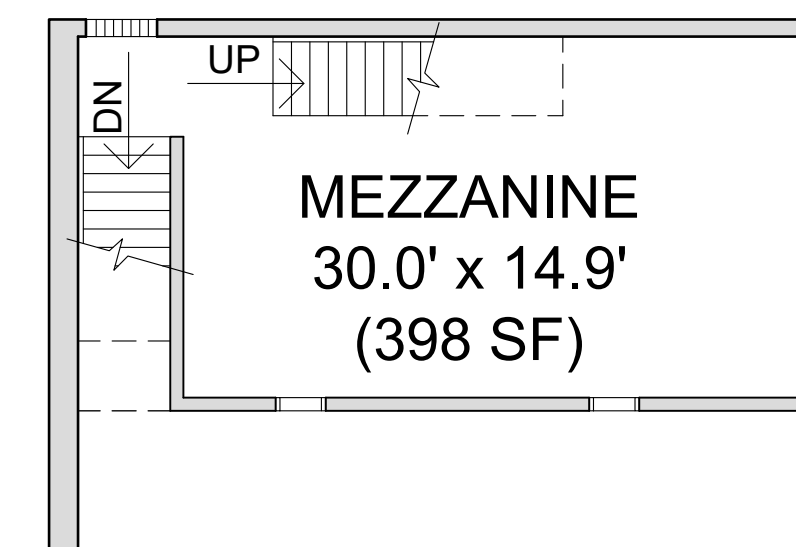
9450, 9450-2 JOSEPH CAMPAU



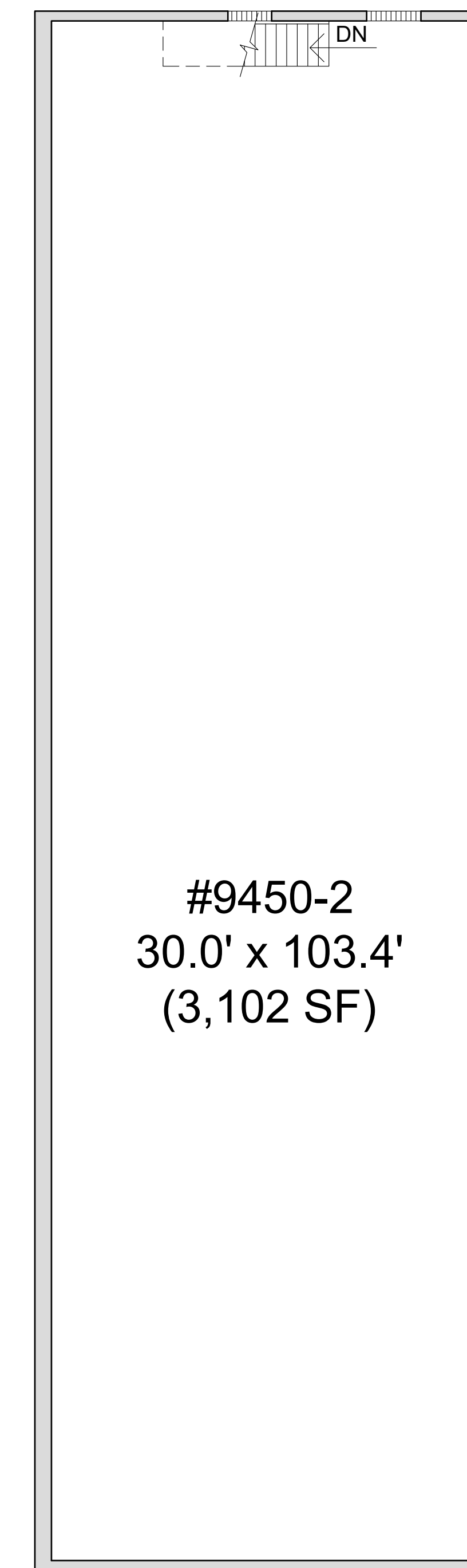
Front of Building
BASEMENT



Front of Building
First Floor



Front of Building
Mezzanine



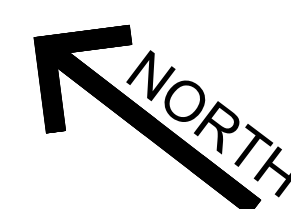
Front of Building
Second Floor

NOTES:

1. TENANT SPACE AREA CALCULATIONS WHERE EXISTING DEMISING WALLS ARE PRESENT: DETERMINED BY MEASUREMENT TO THE CENTER OF DEMISING WALLS/PARTITIONS AND TO THE EXTERIOR FACE OF EXTERIOR WALLS.
2. INTERIOR TENANT SPACE WIDTH AND DEPTH DIMENSIONS ARE APPROXIMATE AS SHOWN. FOR EXACT WIDTH AND DEPTH DIMENSIONS, EACH TENANT SPACE SHOULD BE MEASURED BY A QUALIFIED PROFESSIONAL.
3. THE ORIENTATION OF THE INDICATED NORTH ARROW MAY NOT BE 'TRUE NORTH', BUT IS SUBSTANTIALLY NORTH. AS SUCH, IT IS 'CALLED NORTH' AND IS NOT INTENDED FOR NAVIGATIONAL USAGE.
4. UNIT SIZES & AREA ARE APPROXIMATE.



JMC MANAGEMENT LLC
A FULL SERVICE BROKERAGE AND MANAGEMENT FIRM



FLOOR PLANS

NOT TO SCALE