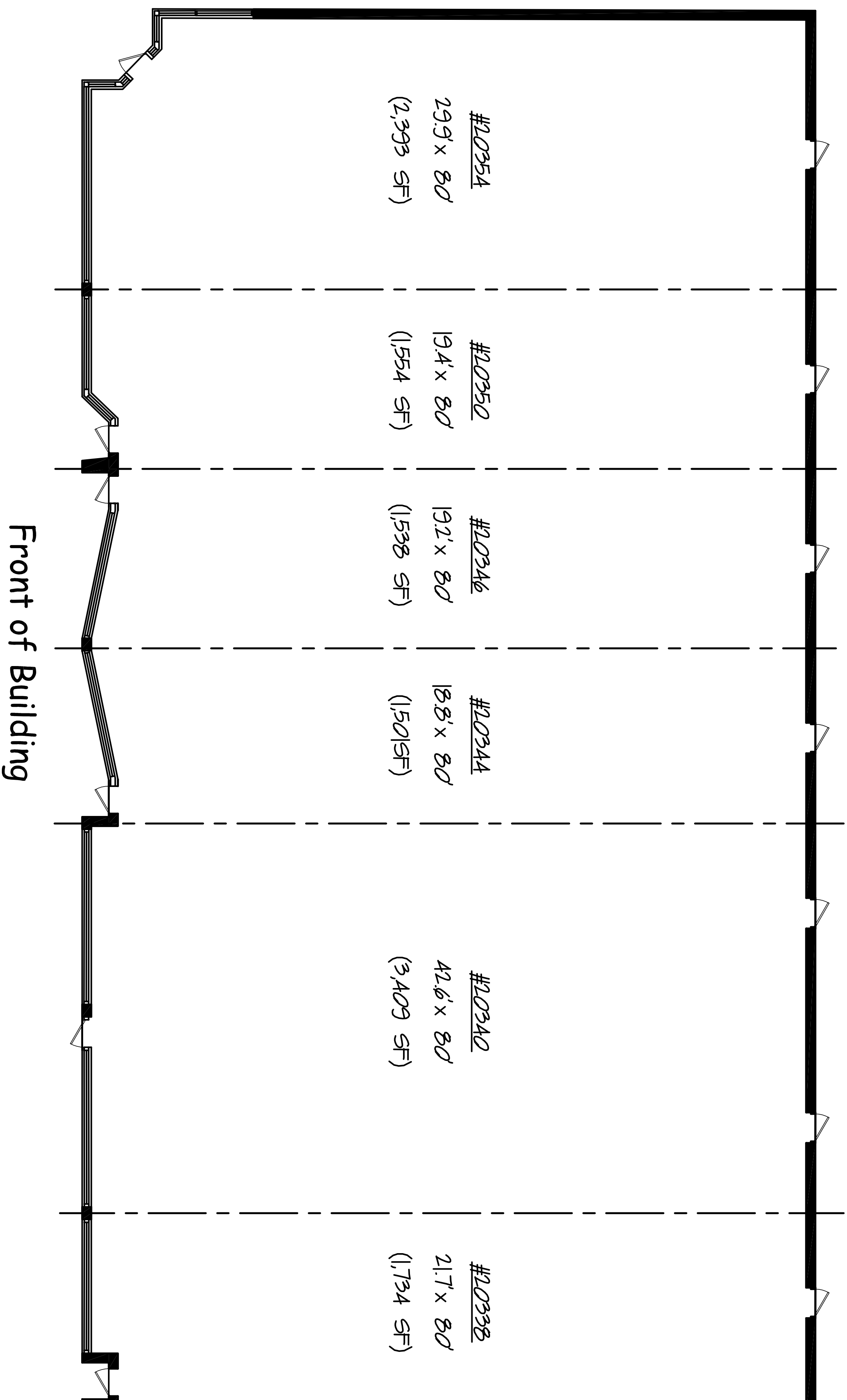
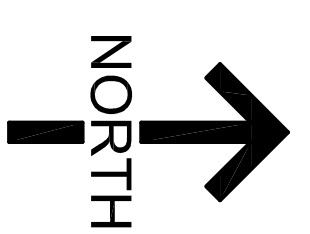


Evergreen Pointe East

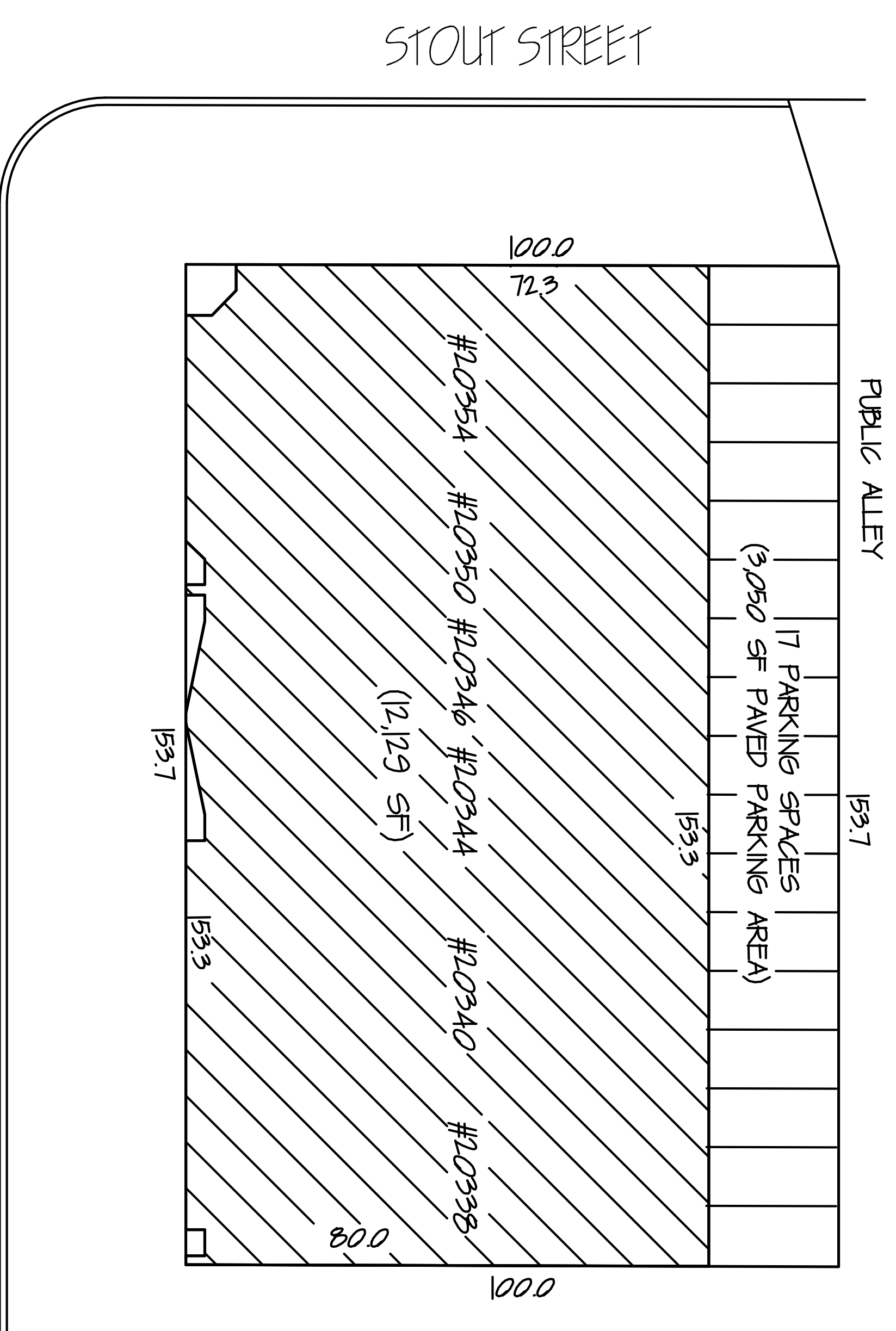
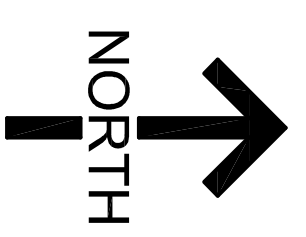
20338 - 20354 West Seven Mile Road



FLOOR PLAN
 24" X 36" DRAWING SCALE: 1/8"=1'-0"
 12" X 18" DRAWING SCALE: 1/8"=1'-0"



PARKING LOT LAYOUT
 24" X 36" DRAWING SCALE: 1"=16'
 12" X 18" DRAWING SCALE: 1"=30'



20338 - 20354 W. SEVEN MILE ROAD



JMC MANAGEMENT LLC
 A FULL SERVICE BROKERAGE AND MANAGEMENT FIRM

NOTES:

- TENANT SPACE AREA CALCULATIONS WHERE EXISTING DEMISING WALLS ARE PRESENT: DETERMINED BY MEASUREMENT TO THE CENTER OF DEMISING WALLS/PARTITIONS AND TO THE EXTERIOR FACE OF EXTERIOR WALLS.
- INTERIOR TENANT SPACE WIDTH AND DEPTH DIMENSIONS ARE APPROXIMATE AS SHOWN. FOR EXACT WIDTH AND DEPTH DIMENSIONS, EACH TENANT SPACE SHOULD BE MEASURED BY A QUALIFIED PROFESSIONAL.
- THE ORIENTATION OF THE INDICATED NORTH ARROW MAY NOT BE 'TRUE NORTH', BUT IS SUBSTANTIALLY NORTH. AS SUCH, IT IS CALLED 'NORTH' AND IS NOT INTENDED FOR NAVIGATIONAL USAGE.